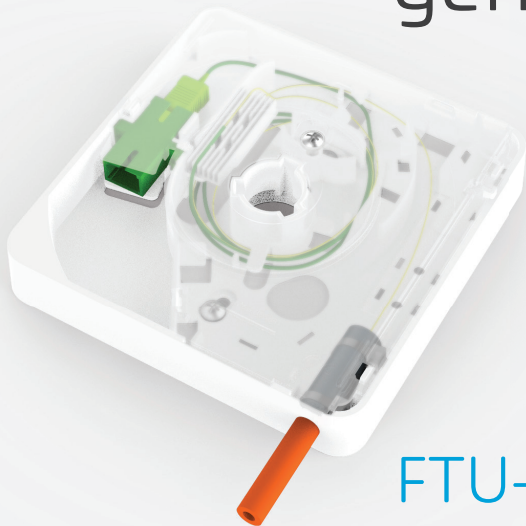


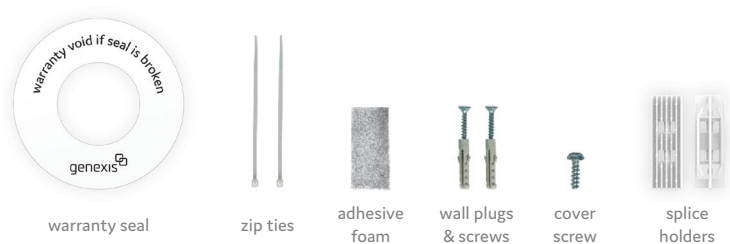
genexis 



FTU-1000

FiberTwist-Series
Installation Guide

In the box



Fiber Termination Unit
(FTU)

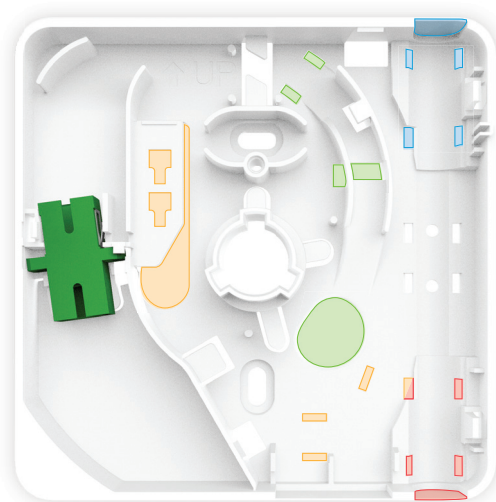


transparent demarcation cover

Installation guide

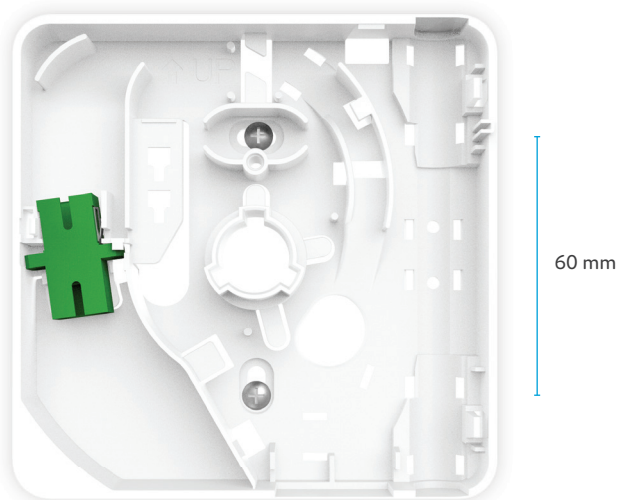
Choose configuration

- Choose one of the four ingress ports to use for the feeder fiber.
- If using ingress port 1 or 2, cut out the oblong blank of the FTU.
- For a patch-out, cut out the rectangle blank at the bottom of the FTU.
- Insert 2 zip ties in the set of holes matching your chosen configuration.



Mount FTU to the wall

Use the drilling template provided to mount the FTU to the wall. The FTU can also be mounted directly on a wall junction box. The drilling template is available on <https://genexis.eu/download-portal/#fibertwist>



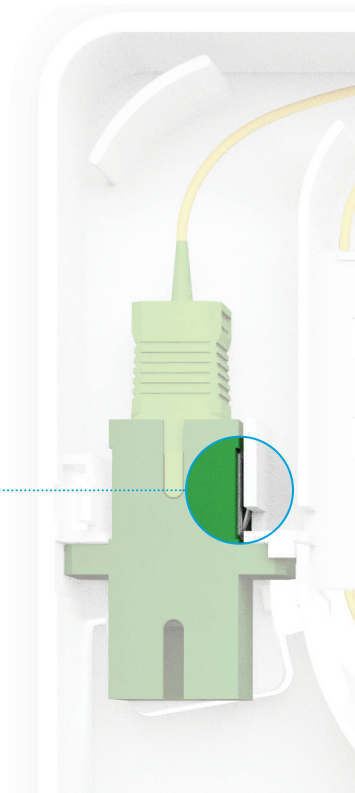
Attach pigtail or patch cable

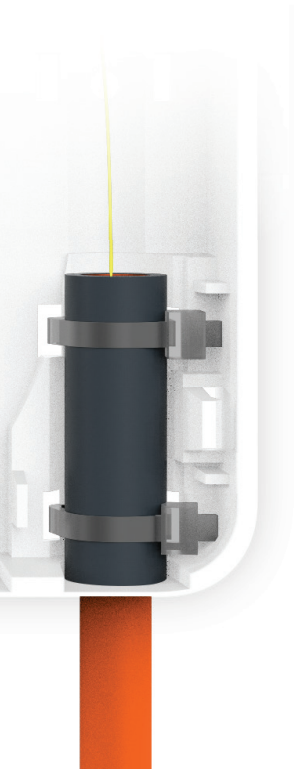
- Remove the SC/APC coupler from the FTU.
- Take the protective cap off the top end and plug the fiber into the coupler.
- Put the coupler and fiber back in the FTU.

There is only one correct way to put the connector back in the FTU:

- The slots must be facing upwards.
- The single metal clip on the right hand side must face towards the middle of the FTU.

Clip



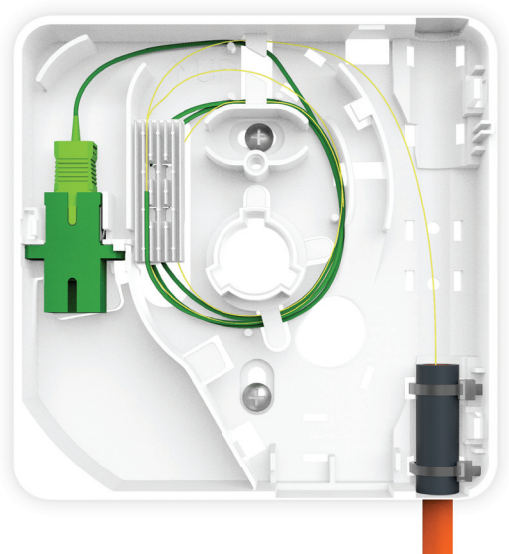


Attach feeder fiber

- Strip the outer sheath off the feeder fiber.
- If required, install a gasblocker. The gasblocker should rest in the recess.
- Peel the backing off the foam padding before wrapping it around the base of the feeder fiber.
- Position the feeder fiber in the FTU and secure in place using the zip ties. Trim the excess ends off the zip ties.

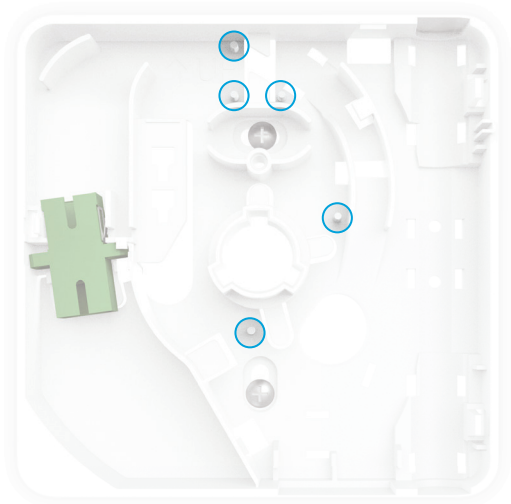
Splice fiber(s)

- Place the appropriate splice holder.
- Splice the feeder fiber and pigtail together
- Place the splice in the splice holder.
- Store the overlength fiber in the FTU.
- Perform any tests required to guarantee the quality of the splice.



Thick cable support (optional)

The FTU supports the ability to connect to a – potentially pre-connectorized – thicker cable. If needed, the highlighted pillars can be removed with pliers to create additional room for the thicker cable.

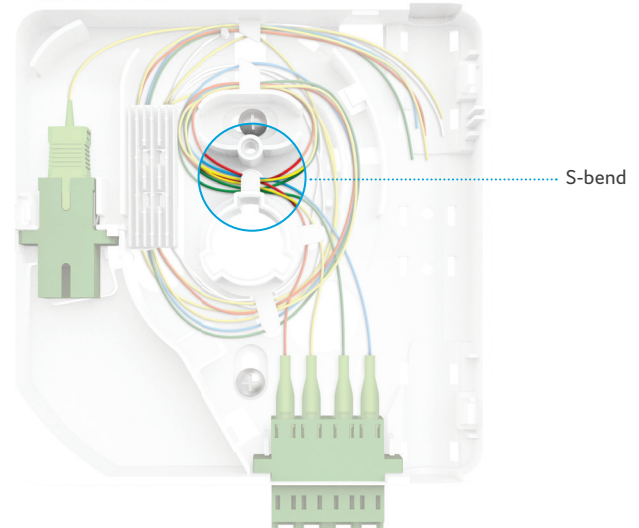


Removable pillars

Patch out (optional)

The device supports the ability to patch out multiple feeder fibers. The patch port can be used with a duplex SC coupler or with a quad LC coupler.

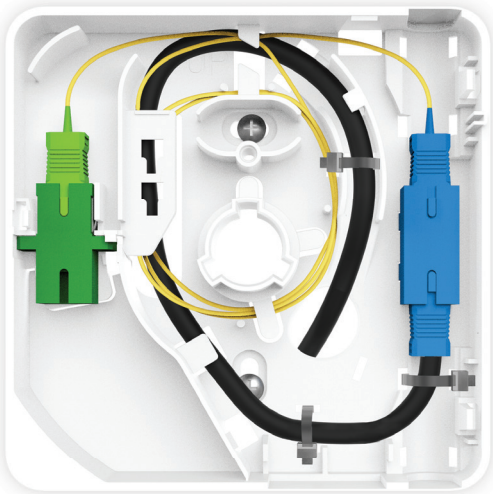
- Connect the pigtails to the patch out coupler. To orient the cables the correct way for the splice, run the pigtails through the center "S-bend".
- Splice the pigtails with the feeder fibers.
- Place the splices in the splice holder.



SC/(U)PC to SC/APC (optional)

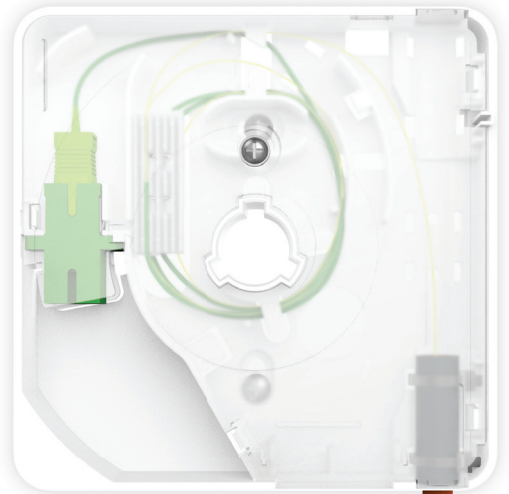
The device supports using a pre-connectorized fiber with a SC/(U)PC connector.

- Insert a SC/(U)PC coupler as shown in the image.
- Connect the pre-connectorized fiber to the SC/(U)PC coupler.
- Connect the SC/(U)PC to SC/APC patch cable to the SC/(U)PC and SC/APC couplers.



Finish installation

- Remove the remaining protective cap from the FiberTwist coupler.
- Click the transparent cover on the FTU.
- Fasten the cover to the baseplate with the screw provided.
- If required, place a seal over the screw.
- Install the active unit or blind cover.



Revision 1.1 November 2019, Copyright © 2019 Genexis B.V. All rights reserved.

Genexis assumes no responsibility for any inaccuracies in this document. Genexis reserves the right to change, modify, transfer, or otherwise revise this publication without notice.