

genexis 



XGS2420

FiberTwist Series
Installation Guide

LED overview



Power

- Green – system ok
- Green (blinking) – booting / firmware download
- Off – power off

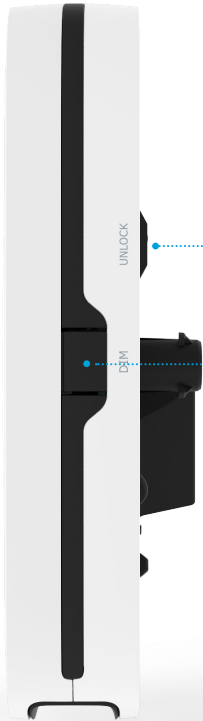
Uplink

- Green – link ok
- Green (blinking) – link establishing
- Off – no link

TV

- Green – TV signal ok
- Green (blinking) – insufficient input signal
- Off – no TV signal

Button overview



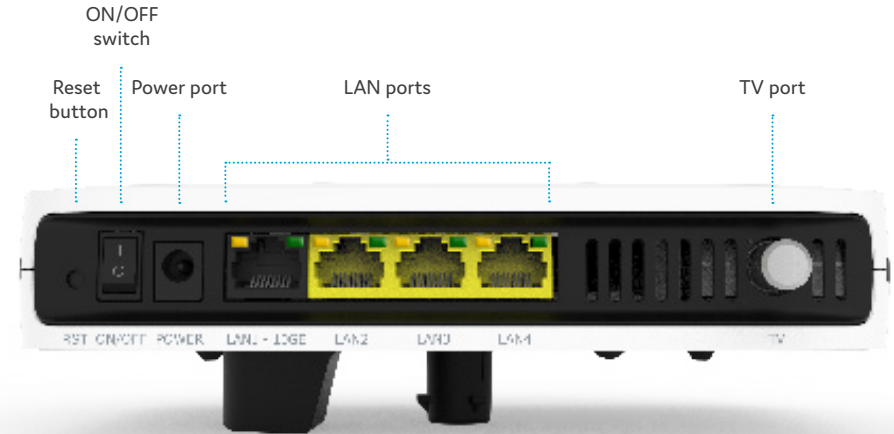
Unlock button

Remove FiberTwist XGS2420 – press and hold while twisting counterclockwise

LED dim button

Dim LEDs – press and release repeatedly to dim LEDs

Port overview



Reset button (recessed)

Reboot – short press (up to 10 seconds)
Factory reset – long press (more than 10 seconds)

ON/OFF switch

Switch ON – flip the switch to ON
Switch OFF – flip the switch to OFF

Installation guide

FiberTwist XGS2420 is installed on an FTU/Bracket

Various translations of this document (if available) and additional product information can be found on <https://genexis.eu/product/fibertwist/downloads>

Box contents

- Genexis FiberTwist XGS2420
- Power adapter
- Labels (self-adhesive)

Label

More information can be found on the product label which is positioned on the bottom of the active device.

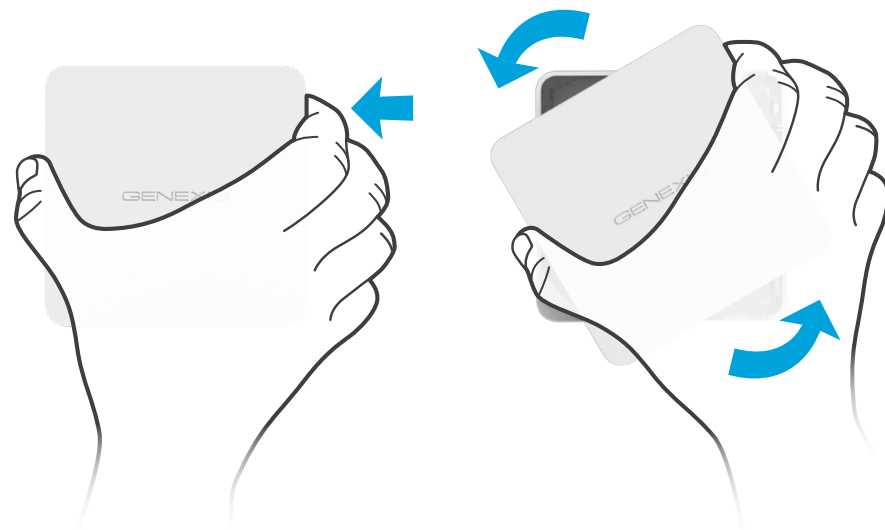
Preparation

Ensure there is a power socket within reach of where the device is being installed.

Important: Instructions need to be followed precisely and uninterrupted. This minimizes the risk of damage (a severe degradation of signal quality) to the fiber optic connectors

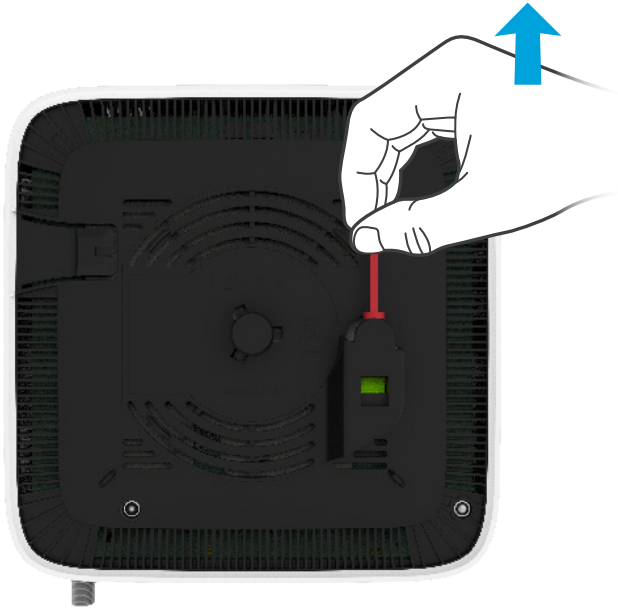
Remove Blind Cover or active device (if present)

1. Press and hold the unlock button (on the right side of the Blind Cover or active device).
2. Rotate the Blind Cover or active device counterclockwise till it blocks.
3. Remove the Blind Cover or active device from the baseplate (FTU/Bracket) by pulling it towards yourself.
4. Store the Blind Cover or active device in a safe place.



Remove dust cap

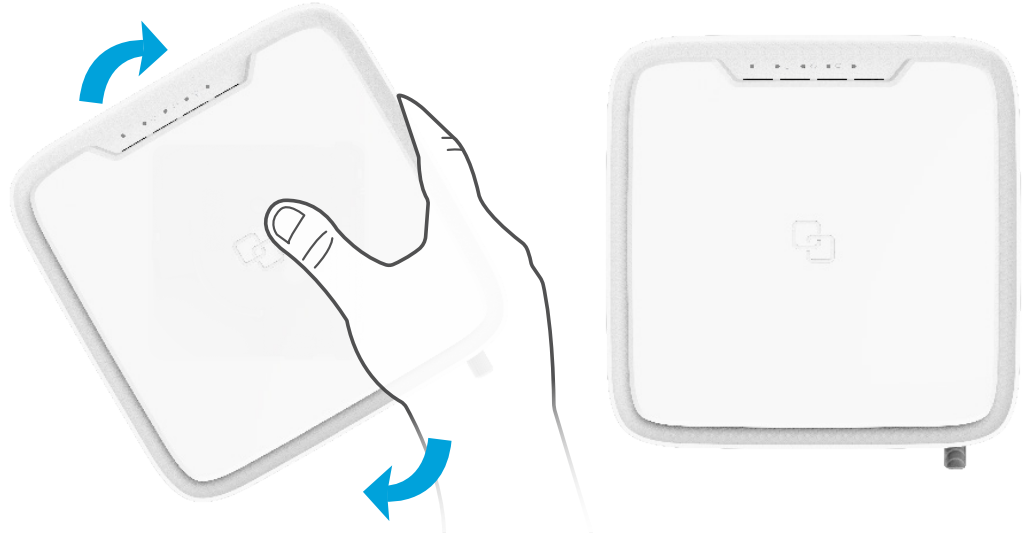
1. Take the FiberTwist XGS2420 out of the box.
2. The dust cap is connected to the red string located on the rear of the FiberTwist XGS2420.
3. Remove the dust cap by pulling the red string.
4. Store the dust cap in a safe place.



Twist!

1. Place the FiberTwist XGS2420 on the FTU/Bracket as shown in the picture below.
2. Rotate clockwise until it clicks into place.
3. Make sure the FiberTwist XGS2420 is aligned squarely on the FTU/Bracket.

Your FiberTwist XGS2420 is now installed!



Connecting the FiberTwist

1. If required, connect your television / set-top box to the TV port with a coax cable.
2. If required, connect your personal devices to the LAN ports via an RJ45 network cable.
A CAT6 cable or better is recommended.
3. Connect the supplied power adapter to the FiberTwist and plug the adapter into a power socket.
4. Press the ON/OFF button to power on the device.

If at some point in the future it becomes necessary to uninstall the FiberTwist, please place the Blind Cover back on the FTU/Bracket immediately and put the dust cap back on the FiberTwist.

The FiberTwist is a Class 1 laser product.

EU Declaration of Conformity

Hereby, Genexis Netherlands B.V. declares that the radio equipment type FiberTwist XGS2420 is in compliance with Directive 2014/53/EU, Directive 2009/125/EC, Directive 2011/65/EU and Delegated Directive 2015/863.

The full text of the EU declaration of conformity is available at the following internet addresses:
<https://genexis.eu/red/ft-xgs2420>

Company Name

Genexis Netherlands B.V.

Company Address

Lodewijkstraat 1a
5652 AC Eindhoven
The Netherlands

Name and title of authorized person

Maarten Egmond, CTO

Signature of authorized person



Place of issue

Eindhoven
The Netherlands

Date of issue

2021-11-24

Revision 1.1 - February 2022 - Copyright © 2022 Genexis Netherlands BV. All rights reserved.

Genexis assumes no responsibility for any inaccuracies in this document. Genexis reserves the right to change, modify, transfer, or otherwise revise this publication without notice.