



F2110

FiberTwist-Series
Installation Guide

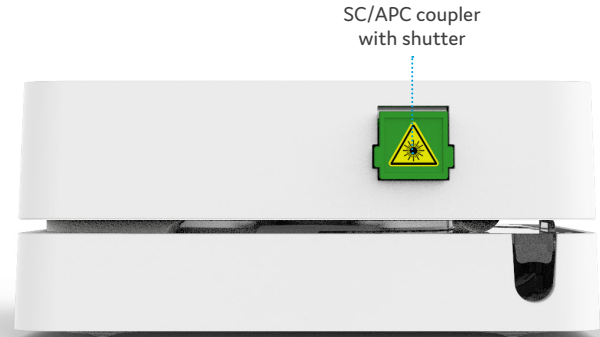
Button overview



Unlock button

Remove FiberTwist or Blind Cover – press and hold while twisting counterclockwise

Port overview



SC/APC coupler
with shutter

Installation guide

Multiple languages of this document and additional product information are available on <https://genexis.eu/download-portal/#fibertwist>

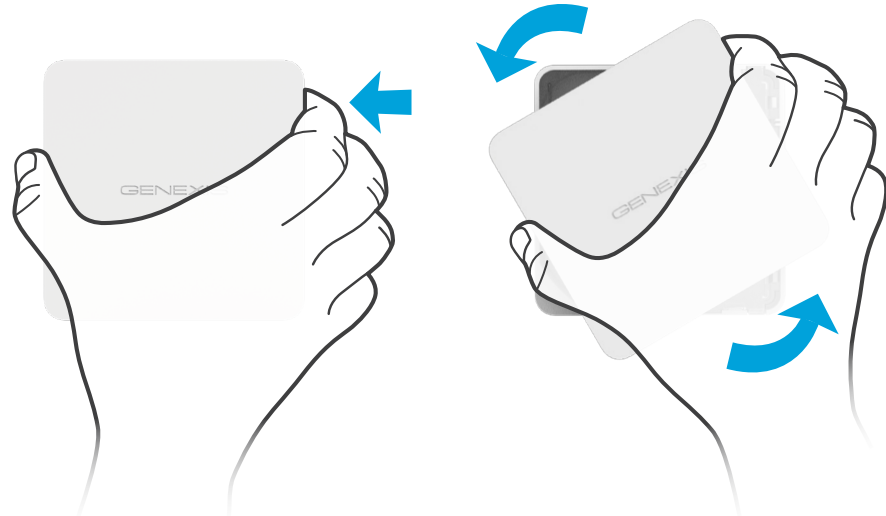
Box contents

- Genexis FiberTwist-F2110

Important: These instructions need to be followed precisely and uninterrupted. This minimizes the risk of damage to the fiber optic connectors, causing a severe degradation of signal quality.

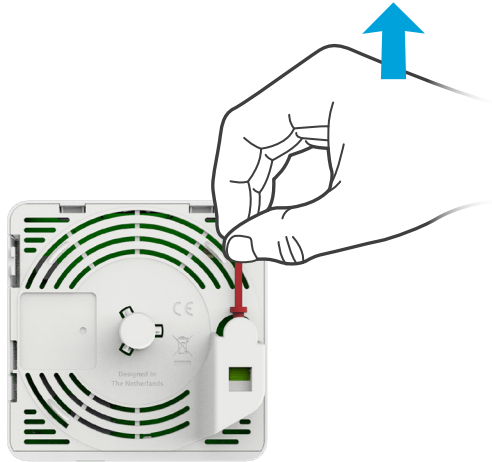
Remove Blind Cover (if present)

- Press and hold the unlock button (see button overview).
- Rotate the Blind Cover counterclockwise till it blocks.
- Remove the Blind Cover from the baseplate (FTU) by pulling it towards yourself.
- Store the Blind Cover in a safe place.



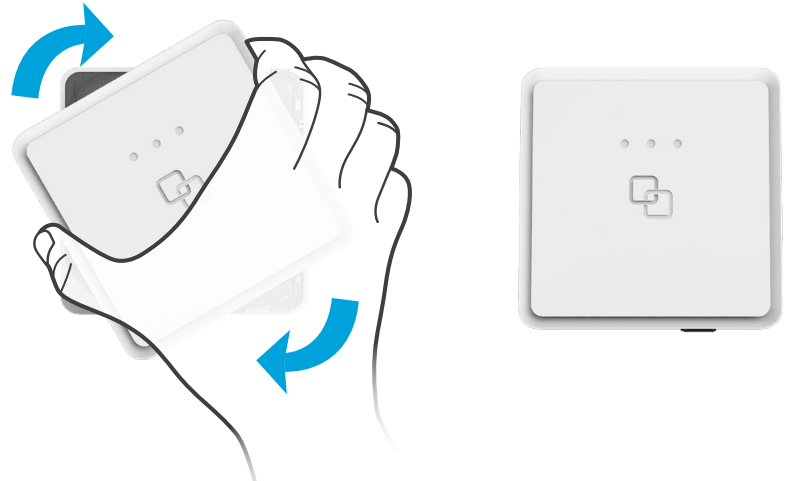
Remove dust cap

- Take the FiberTwist out of the box.
- The dust cap is connected to the red string located on the rear of the FiberTwist.
- Remove the dust cap by pulling the red string.
- Store the dust cap in a safe place.



Twist!

- Place the FiberTwist on the FTU as shown in the picture below, in a 30-degree angle.
 - Rotate clockwise until it clicks into place.
 - Make sure the FiberTwist is aligned squarely on the FTU, each edge must line up directly with the FTU below.
 - Open the green shutter from the SC/APC coupler.
 - Connect your fiber gateway to the SC/APC port using a fiber patch cable.
- Your FiberTwist is now installed



Revision 1.0 April 2020, Copyright © 2020 Genexis BV. All rights reserved.

Genexis assumes no responsibility for any inaccuracies in this document. Genexis reserves the right to change, modify, transfer, or otherwise revise this publication without notice.