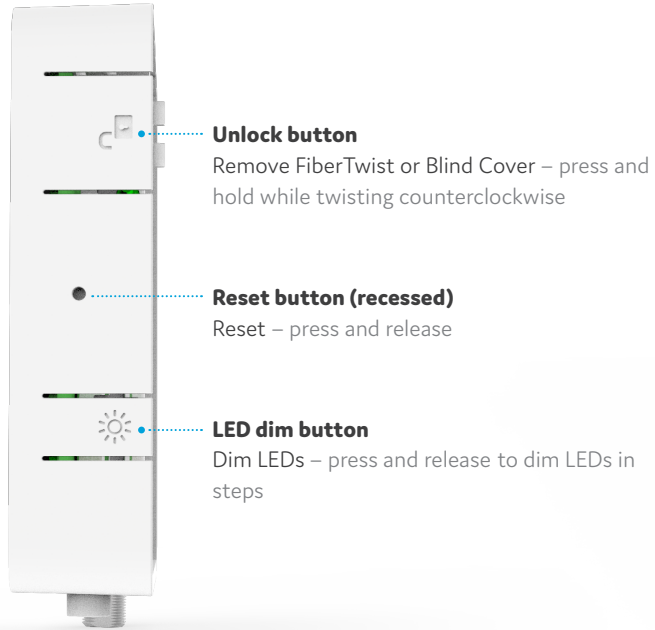




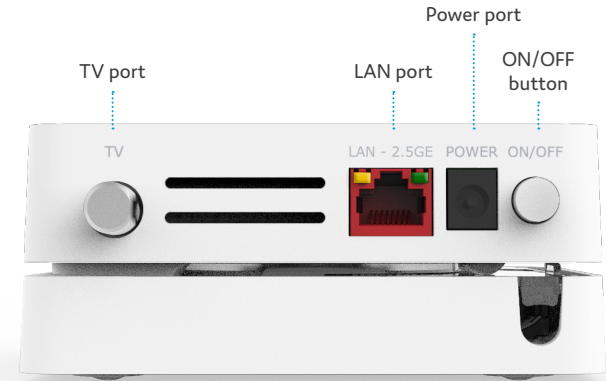
XGS2120-2.5G

FiberTwist-Series
Installation Guide

Button overview



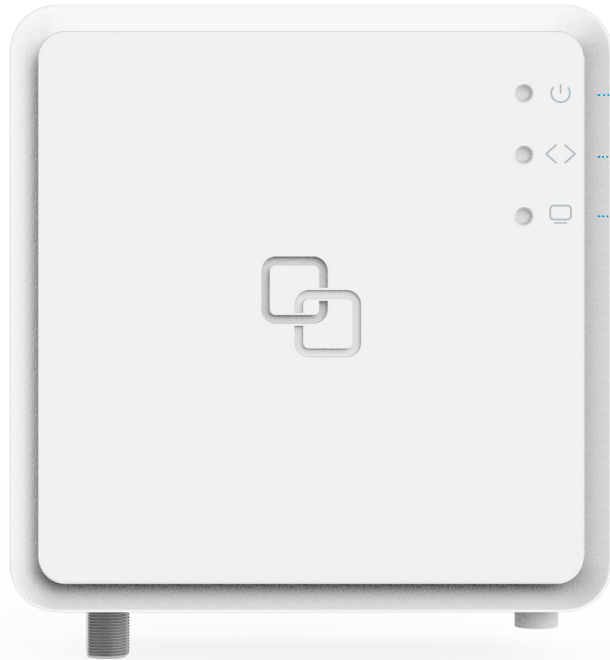
Port overview



ON/OFF button

Power ON or OFF – press and release to switch device ON or OFF

LED overview



System

Green – system ok
Green (blinking) – booting / firmware download
Off – power off

Uplink

Green – link ok
Green (blinking) – link establishing
Off – no link

TV

Green – TV ok
Green (blinking) – insufficient input signal
Off – no TV

Installation guide

Different language versions of this document and additional product information are available on <https://genexis.eu/product/fibertwist/downloads>

Box contents

- Genexis FiberTwist (active device)
- Power adapter
- 2x Spare device label (self-adhesive)
- Installation Guide (this document)

Label position

The product label is positioned on the back of the active device.

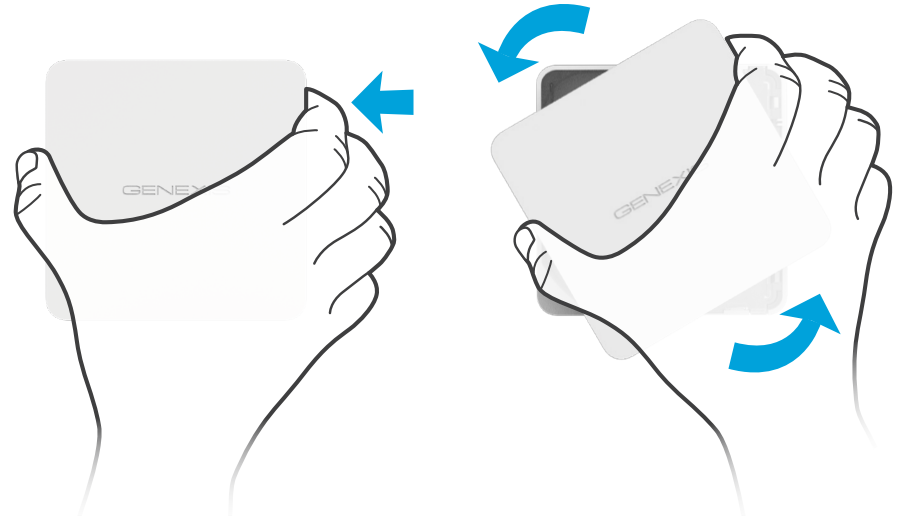
Preparation

Ensure there is a power socket within reach of where the device is being installed.

Important: Instructions need to be followed precisely and uninterrupted. This minimizes the risk of damage to the fiber optic connectors, causing a severe degradation of signal quality.

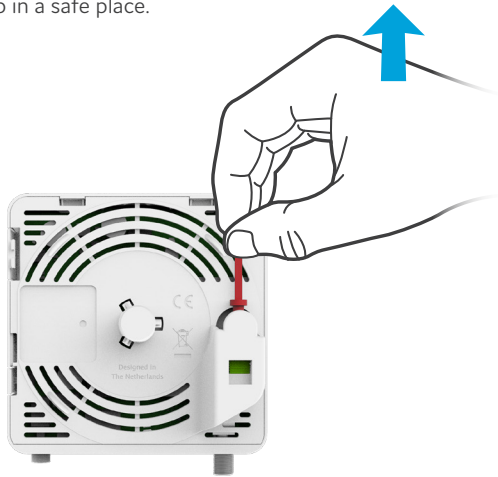
Remove Blind Cover (if present)

1. Press and hold the unlock button (see button overview).
2. Rotate the Blind Cover counterclockwise till it blocks.
3. Remove the Blind Cover from the baseplate (FTU) by pulling it towards yourself.
4. Store the Blind Cover in a safe place.



Remove dust cap

1. Take the FiberTwist out of the box.
2. The dust cap is connected to the red string located on the rear of the FiberTwist.
3. Remove the dust cap by pulling the red string.
4. Store the dust cap in a safe place.



Twist!

1. Place the FiberTwist on the FTU as shown in the picture below, in a 30-degree angle.
2. Rotate clockwise until it clicks into place.
3. Make sure the FiberTwist is aligned squarely on the FTU, each edge must line up directly with the FTU below.

Your FiberTwist is now installed!



Connecting the FiberTwist

- 1. If required, connect your television / set-top box to the TV port with a coax cable.
- 2. If required, connect your personal devices to the LAN ports via an RJ45 network cable.
- 3. Connect the supplied power adapter to the FiberTwist and plug the adapter into a power socket.
- 4. Press the ON/OFF button to power on the device.

If at some point in the future it becomes necessary to uninstall the FiberTwist, please place the Blind Cover back on the FTU immediately and put the dust cap back on the FiberTwist.

Warning: The FiberTwist is a Class 1 laser product.

EU Declaration of Conformity

Hereby, Genexis Netherlands B.V. declares that the product FiberTwist-XGS2120-2.5G is in compliance with Directives 2014/30/EU, 2014/35/EU, 2011/65/EU, Delegated Directive 2015/863 and Ecodesign Directive 2009/125/EC.

The full text of the EU declaration of conformity is available at the following internet address: <https://genexis.eu/product/fibertwist/red/fibertwist-xgs2120-2-5g>

Company Name
Genexis Netherlands B.V.

Signature of authorized person

Company Address
Lodewijkstraat 1a
5652 AC Eindhoven
The Netherlands



Name and title of authorized person
Maarten Egmond, CTO

Place of issue
Eindhoven
The Netherlands

Date of issue
2021-04-15

Revision 1.1 - September 2021 - Copyright © 2021 Genexis Netherlands B.V. All rights reserved.

Genexis assumes no responsibility for any inaccuracies in this document. Genexis reserves the right to change, modify, transfer, or otherwise revise this publication without notice.