



# Genexis CloudSight management system

Datasheet



The CloudSight device management platform takes advantage of all iopsys functionality to provide the best solution available to manage Genexis equipment.

Not only does it provide upgrade and provisioning capabilities, it also brings in depth insights in the end user home network for data analytics and real-time support.

## Key features

### Automatic grouping of devices per home

With more WiFi range extenders coming to the home it becomes harder to get a good overview of the connected devices. The CloudSight management platform automatically groups devices that belong to the same home and provides system level overview of the connected devices.

### Realtime access to home insight

Support has realtime insight in the status of the customer home. The support desk analyses the home and receives alerts with clear instructions on how to remedy the situation.

### Selfcare

The CloudSight selfcare application allows the end user to easily see his home network and correct potential issues. The open SDK provides fully customizable features and design.

### Real-time data collection and analytics

Each home can have home specific services activated and provisioned which include the installation and configuration of additional applications on the Genexis devices e.g. Firmware upgrade, VPN setup, port installation, voice features etc.

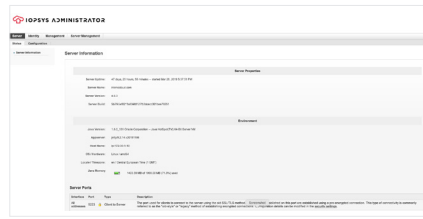
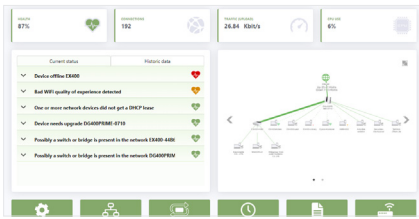
### Monitoring

Large scale collection of standard data like syslog and any data available in the Genexis device or home network can be performed on demand or at regular intervals providing in depth information of the home to better analyze and correct potential issues.



# Product features

## CloudSight management - Secure real-time communication based on XMPP



### Manage provision devices

- REST-API
- Manage accounts
  - Import accounts
  - Push accounts to devices
- View registered (trusted) and unregistered devices
- Helpdesk user management & access levels
- Data analytics user management
- Create user groups
- Export collected user data
- Organize software and devices
  - Software architectures
  - Firmwares and packages
  - Create device groups
- Define services
  - Access to the service per custom user group
  - Service network performance requirements
  - Reports of installed services
  - Upload scripts and provisioning data
- Install & provision embedded software
  - Schedule upgrades and package installations per group
  - Schedule service installations and provisioning
  - Check upgrade and installation progress

### Support

- Dashboard summarizing the health of the device park
- Pro-active support dashboard to identify devices that have highest issue count
- Search functions to easily find homes and devices
- Home dashboard with fast access to the network topology map, real-time and diagnostics tools including:
  - GUI-cut-through
  - Historic data
  - Speed test & iperf link quality test
  - System monitor
  - Remote shell
  - Details of connected devices
  - Service provisioning per box

### Data collection and analytics

- Data collection of the device park
  - Syslog data
  - System statistics
  - Script based data collection
- Kibana and Elasticsearch data exploration tools
- Alarm & report management
  - Create watchers rules to monitor home device network health
  - Create automated actions based on the discovered issues e.g. reboot
  - Create reports based on the available dashboards

### Selfcare application

- Single application with fully customizable SDK
- Cloud connected provides full support
  - Manage WiFi settings & placement advice for the Genexis WiFi extender
  - Topology map and details of home network
  - Access connected storage
  - Access connected cameras
  - Manage internet access
- Local access provides restricted functionality and only manages one device at a time

**Genexis Belgium**  
 c/o Inteno BVBA  
 Schaliënhoeverdreef 20C  
 2080 Mechelen  
 +32 4995 65548  
 belgium@genexis.eu

**Genexis Denmark**  
 c/o Inteno Denmark A/S  
 Højbyvej 19  
 4320 Lejre  
 +45 4440 2500  
 denmark@genexis.eu

**Genexis Finland**  
 c/o Inteno Netmedia Oy AB  
 Rällsintie 10  
 00720 Helsinki  
 +358 71 44 50100  
 finland@genexis.eu

**Genexis Germany**  
 c/o Genexis GmbH  
 An der Poent 48  
 40885 Ratingen  
 +49 (2102) 1237 510  
 germany@genexis.eu

**Genexis Netherlands**  
 c/o Genexis B.V.  
 Lodewijkstraat 1A  
 5652 AC Eindhoven  
 +31 (0) 40 747 0247  
 info@genexis.eu

**Genexis Norway**  
 c/o Inteno Broadband Technology AS  
 Solheimveien 36  
 1473 Lørenskog  
 +47 67 91 19 30  
 norway@genexis.eu

**Genexis Sweden**  
 c/o Inteno Broadband Technology AB  
 Stensättravägen 13  
 127 39 Skärholmen  
 +46 8 579 190 00  
 sweden@genexis.eu