

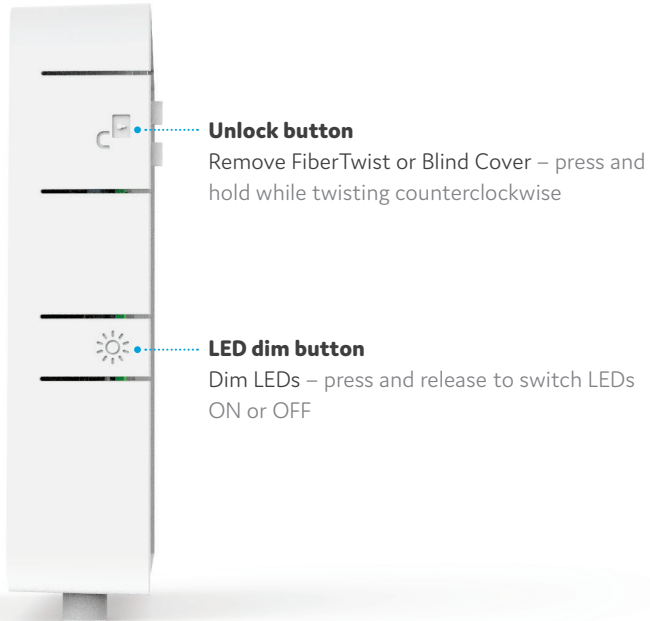
genexis 



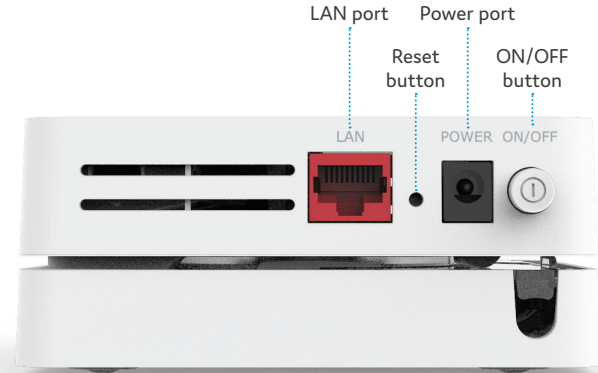
G2110

FiberTwist-Series
Installation Guide

Button overview



Port overview



Reset button (recessed)

Reset – press and release

Factory reset – press and hold 5 seconds

ON/OFF button

Turn ON or OFF – press and release to switch device ON or OFF

LED overview



System

Green – system ok
Green (blinking) – booting
Off – power off

Uplink

Green – GPON link ok
Green (blinking) – GPON link establishing
Off – no GPON link

Optical signal

Red – no optical signal
Off – optical signal ok

LAN

Green – LAN port connected, no traffic
Green (blinking) – LAN port connected, traffic ongoing
Off – LAN port not connected

Installation guide

Multiple languages of this document and additional product information are available on <https://genexis.eu/download-portal/#fibertwist>

Box contents

- Genexis FiberTwist (active device)
- Power adapter
- Label (self-adhesive)
- Installation Guide (this document)

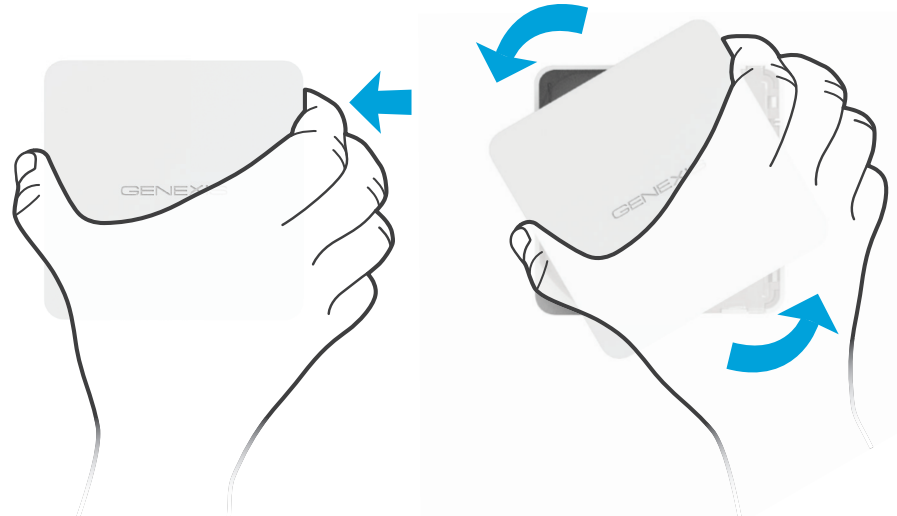
Preparation

Ensure there is a power socket within reach of where the device is being installed.

Important: These instructions need to be followed precisely and uninterrupted. This minimizes the risk of damage to the fiber optic connectors, causing a severe degradation of signal quality.

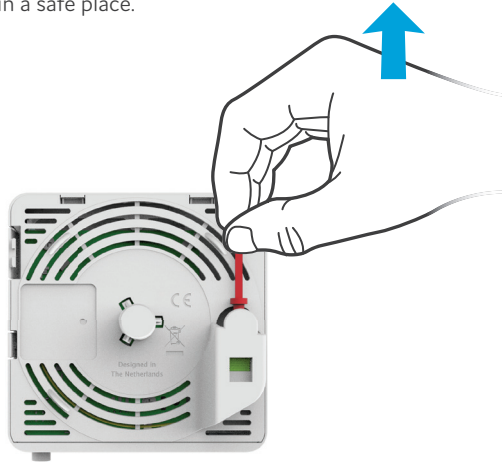
Remove Blind Cover (if present)

- Press and hold the unlock button (see button overview).
- Rotate the Blind Cover counterclockwise till it blocks.
- Remove the Blind Cover from the baseplate (FTU) by pulling it towards yourself.
- Store the Blind Cover in a safe place.



Remove dust cap

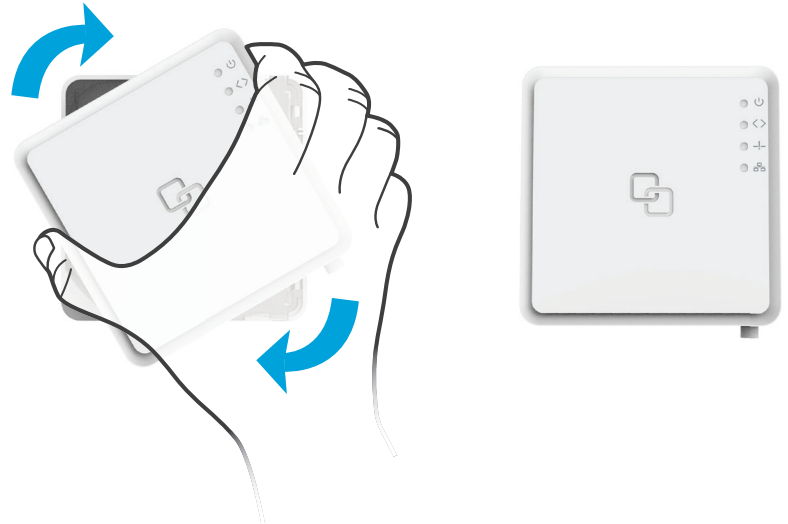
- Take the FiberTwist out of the box.
- The dust cap is connected to the red string located on the rear of the FiberTwist.
- Remove the dust cap by pulling the red string.
- Store the dust cap in a safe place.



Twist!

- Place the FiberTwist on the FTU as shown in the picture below, in a 30-degree angle.
- Rotate clockwise until it clicks into place.
- Make sure the FiberTwist is aligned squarely on the FTU, each edge must line up directly with the FTU below.

Your FiberTwist is now installed!



Connecting the FiberTwist

- Connect LAN cable as required.
- Connect the supplied power adapter to the FiberTwist and plug the adapter into a power socket.

If at some point in the future it becomes necessary to uninstall the FiberTwist, please place the Blind Cover back on the FTU immediately and put the dust cap back on the FiberTwist.

Warning: The FiberTwist is a Class 1 laser product.

EU Declaration of Conformity

Hereby, Genexis B.V. declares that the product FiberTwist-G2110 is in compliance with Directives 2014/30/EU, 2014/35/EU, 2011/65/EU and Delegated Directive 2015/863.

The full text of the EU declaration of conformity is available at the following internet address: <https://genexis.eu/red/ft-G2110>

Company Name

Genexis B.V.

Signature of authorized person



Company Address

Lodewijkstraat 1a
5652 AC Eindhoven
The Netherlands

Name and title of authorized person

Maarten Egmond, CTO

Place of issue

Eindhoven
The Netherlands

Date of issue

2019-08-26

Revision 1.1 August 2019, Copyright © 2019 Genexis BV. All rights reserved.

Genexis assumes no responsibility for any inaccuracies in this document. Genexis reserves the right to change, modify, transfer, or otherwise revise this publication without notice.