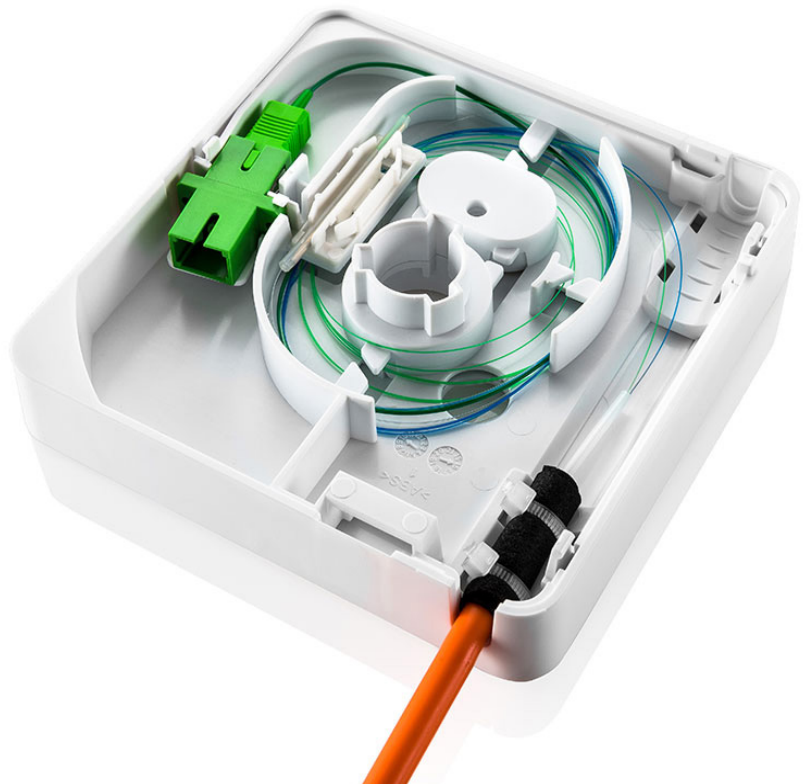


Genexis FiberTwist

FTU-Series

(Fiber Termination Unit)

Base plate and fiber management



The FiberTwist FTU can be used as the foundation for all Genexis FiberTwist active units. This includes those from both the Point-to-Point and GPON families, as well as optical data and RFoG.

The small form factor of the FiberTwist FTU has been specifically designed for fast, efficient and easy installation in any location.

Key Features

- Compact fiber termination unit compatible with all FiberTwist active units
- Patented FiberTwist click-on interface enabling 100% trouble free, DIY active unit installation
- Choice of three fiber ingress locations (top, bottom, back)
- Patch port for an additional patch in or patch out connector
- Wall junction box and DIN rail compatible and supplied with a drilling template, warranty seal, mounting screws, cable ties, cable foam padding and splice holder
- Provision for a gas blocker
- Fiber management and strain relief
- Optional blind cover available to protect the installation until the active unit (NT) is installed

FiberTwist is a unique FTTH connectivity solution that redefines size, ease-of-installation and flexibility for the distribution of fiber bandwidth throughout the home.

With FiberTwist, you only need one product to cover each and every deployment scenario in your network.

Good things come in small parcels

The FiberTwist packages all those needs in a super compact design of only 11 x 11 cm. Its patented Twist interface enables easy installation of active equipment as well as its fiber patch module. Furthermore, the FTU's fiber management system cleverly integrates all technical features one would expect of a professional FTU.

The FTU is capable of holding six fibers. One connects to the active unit, and up to two others can be active at any time. For example: as backup fiber or when using a dual LC coupler in a patch-out scenario.

A choice of three ingress ports provides maximum installation flexibility, while a patch port enables the addition of a connector to be used in either a patch-in or patch-out configuration.



Product features and specifications

Genesis FiberTwist - FTU-Series

General specifications

Dimensions (H x W x D)	
· Base plate	110x110x19 mm
· With blind cover	110x110x40 mm
· With active unit	110x110x46 mm
Weight	
· Base plate	89 g
· With blind cover	136 g
Max. gasblocker size	25 x ø15 mm
Operating temperature	0 - 40 °C
Storage temperature	0 - 70 °C

Fiber management

- Storage for 6 Fibers
- 3 Fiber ingress points (top, bottom, back)
- 1 patch port can accommodate:
 - SC connector
 - Shuttered SC without flanges
 - Shuttered single or dual LC connector
- Sealable Fiber management and strain relief
- Preinstalled pigtail(s) optional
- Fiber types supported:
 - G.657A1
 - G.657A2
 - G.652.D
- 12mm (short) boot

WDM combiner

Wavelengths	
· Common port	1260 - 1560 nm
· CATV	1550 ± 10 nm
· Data (upstream)	1310 ± 50 nm
· Data (downstream)	1490 ± 10 nm
Isolation	15 dB
Directivity into	
· CATV port @1 310 nm:	47 dB
· Insertion loss	0.3 dB
· Return loss	45 dB
Fiber	
· Length	100 cm
· Corning SMF 28, Ultra 900 µm loose tube	

Mounting options

- Wall junction box compatible
- DIN rail compatible

Emissions and safety regulations

- CE IEC 60950
- UL94HB flammability class
- Compliant with the 2011/65/EU RoHS/ WEEE marking

Accessories (supplied)

- Mounting screws and plugs
- Cable ties
- Foam padding
- Splice holders for:
 - 4 ANT splices
 - 2 single fusion with splice sleeve
- Tamper proof seal
- SC/APC Twist connector

Accessories (optional)

- Blind cover (picture below):
 - Finishes and protects the FTU until installation of the NT (active unit)



Genesis FiberTwist FTU Series product models

Model	Twist Connector SC/APC	Pre-installed Pigtail to Twist port	Patch-Out Connector	Pre-installed Pigtails to Patch-Out port	Fiber Entry Point
FiberTwist-FTU-100	Yes	-	-	-	7 mm
FiberTwist-FTU-110	Yes	1x SC/APC	-	-	7 mm
FiberTwist-FTU-110-10mm	Yes	1x SC/APC	-	-	10 mm
FiberTwist-FTU-120	Yes	Combiner: 1x SC/APC, 2x pigtails	-	-	7 mm
FiberTwist-FTU-400	Yes	-	1x SC/APC	-	7 mm
FiberTwist-FTU-411	Yes	1x SC/APC	1x SC/APC	1x SC/APC	7 mm
FiberTwist-FTU-600	Yes	-	duplex LC/APC	-	7 mm
FiberTwist-FTU-611	Yes	1x SC/APC	duplex LC/APC	2x LC/APC	7 mm
FiberTwist-FTU-700-10mm	Yes	-	duplex LC/APC with shutter	-	10 mm
FiberTwist-FTU-711-10mm	Yes	1x SC/APC	duplex LC/APC with shutter	2x LC/APC connected, 2x LC/APC spare	10 mm
FiberTwist-FTU-820	Yes	Combiner: 1x SC/APC, 2x LC/APC	duplex LC/APC (Patch-In)	-	7 mm
FiberTwist-Bracket	Yes	Wall mounted bracket for use with patch-in scenarios			
FiberTwist-FTU-Blindcover	Provides dust protection for the fiber. Fits all FTU models.				

Note: Not every listed feature may be included in the shipping product. We reserve the right to make changes of technical specifications, housing or design without prior notice.