



# F2020 & F2120

FiberTwist-Series  
Installation Guide

## Button overview



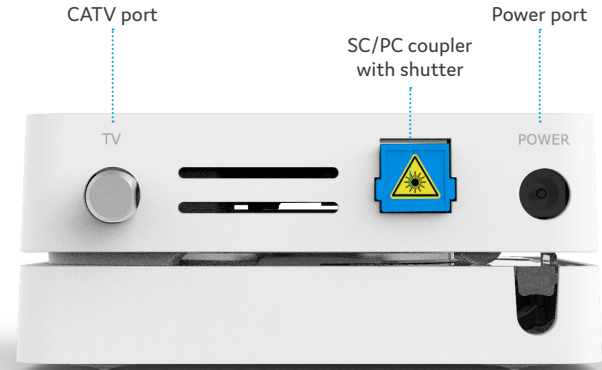
### Unlock button

Remove FiberTwist or Blind Cover – press and hold while twisting counterclockwise

### LED toggle button

Toggle LEDs – press and release to toggle LEDs ON or OFF

## Port overview

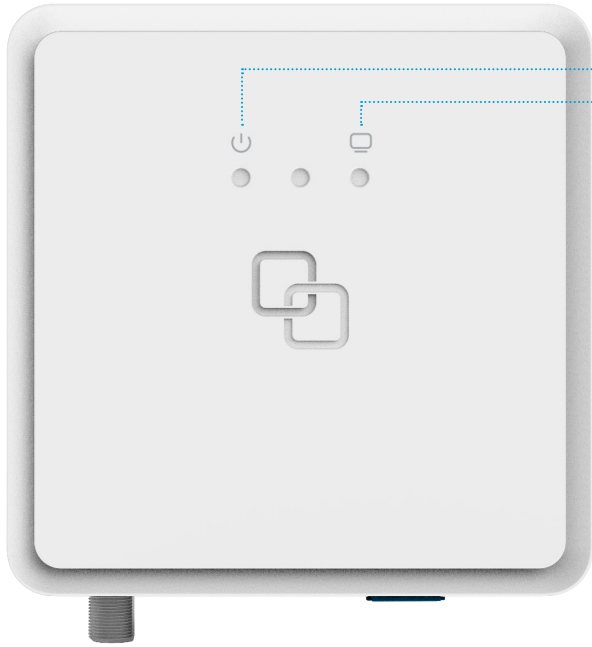


### SC/PC coupler with shutter

F2020 – Optical data port not functional

F2120 – Optical data port functional

## LED overview



### **System**

Green – system ok  
Off – power off

### **CATV**

Green – CATV ok  
Off – no CATV

# Installation guide

Multiple languages of this document and additional product information are available on <https://genexis.eu/download-portal/#fibertwist>

## Box contents

- Genexis FiberTwist (active device)
- Power adapter
- Installation Guide (this document)

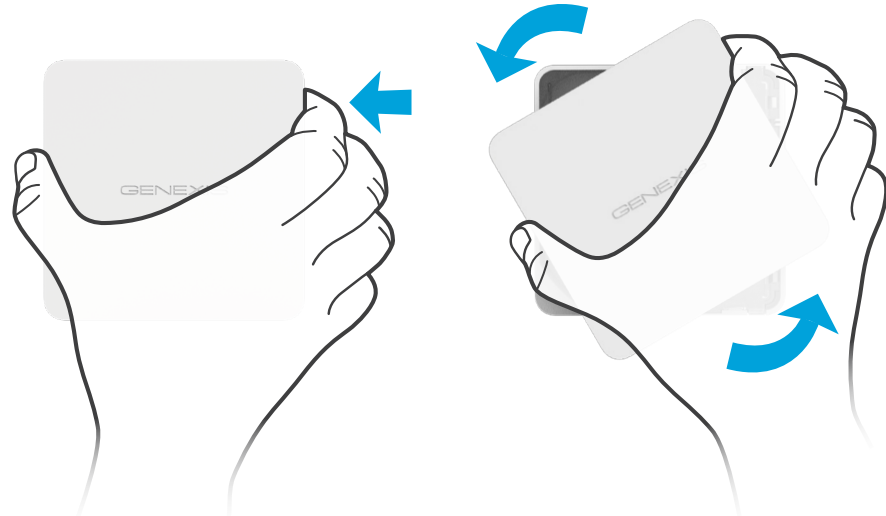
## Preparation

Ensure there is a power socket within reach of where the device is being installed.

**Important:** These instructions need to be followed precisely and uninterrupted. This minimizes the risk of damage to the fiber optic connectors, causing a severe degradation of signal quality.

## Remove Blind Cover (if present)

- Press and hold the unlock button (see button overview).
- Rotate the Blind Cover counterclockwise till it blocks.
- Remove the Blind Cover from the baseplate (FTU) by pulling it towards yourself.
- Store the Blind Cover in a safe place.



### Remove dust cap

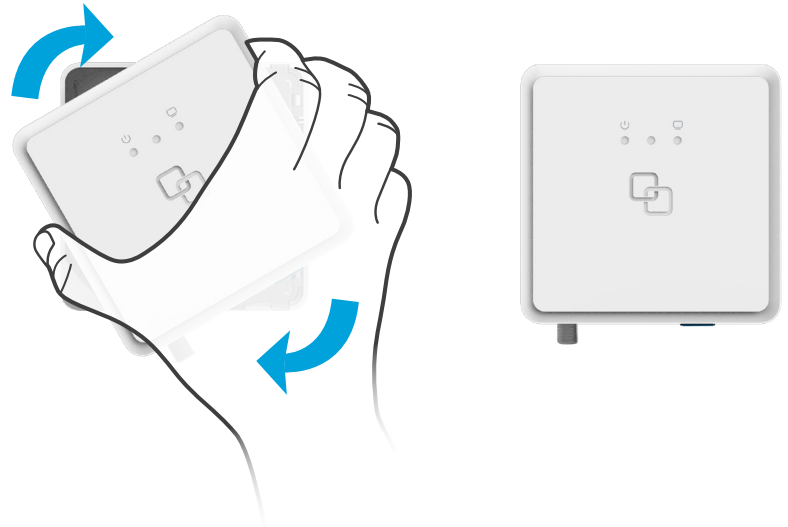
- Take the FiberTwist out of the box.
- The dust cap is connected to the red string located on the rear of the FiberTwist.
- Remove the dust cap by pulling the red string.
- Store the dust cap in a safe place.



### Twist!

- Place the FiberTwist on the FTU as shown in the picture below, in a 30-degree angle.
- Rotate clockwise until it clicks into place.
- Make sure the FiberTwist is aligned squarely on the FTU, each edge must line up directly with the FTU below.

Your FiberTwist is now installed



### Connecting the FiberTwist

- Connect CATV cable as required.
- F2120 only: open the blue shutter from the SC/PC coupler.
- F2120 only: connect your fiber gateway to the SC/PC port using a fiber patch cable.
- Connect the supplied power adapter to the FiberTwist and plug the adapter into a power socket.

If at some point in the future it becomes necessary to uninstall the FiberTwist, please place the Blind Cover back on the FTU immediately and put the dust cap back on the FiberTwist.

## EU Declaration of Conformity

Hereby, Genexis B.V. declares that the product FiberTwist-F2020/F2120 is in compliance with Directives 2014/30/EU, 2014/35/EU, 2011/65/EU and Delegated Directive 2015/863.

The full texts of the EU declaration of conformity are available at the following internet addresses respectively: <https://genexis.eu/red/ft-F2020-F2120>

#### Company Name

Genexis B.V.

#### Company Address

Lodewijkstraat 1a  
5652 AC Eindhoven  
The Netherlands

#### Name and title of authorized person

Maarten Egmond, CTO

#### Signature of authorized person



#### Place of issue

Eindhoven  
The Netherlands

#### Date of issue

2020-04-09

Revision 1.0 April 2020, Copyright © 2020 Genexis BV. All rights reserved.

Genexis assumes no responsibility for any inaccuracies in this document. Genexis reserves the right to change, modify, transfer, or otherwise revise this publication without notice.